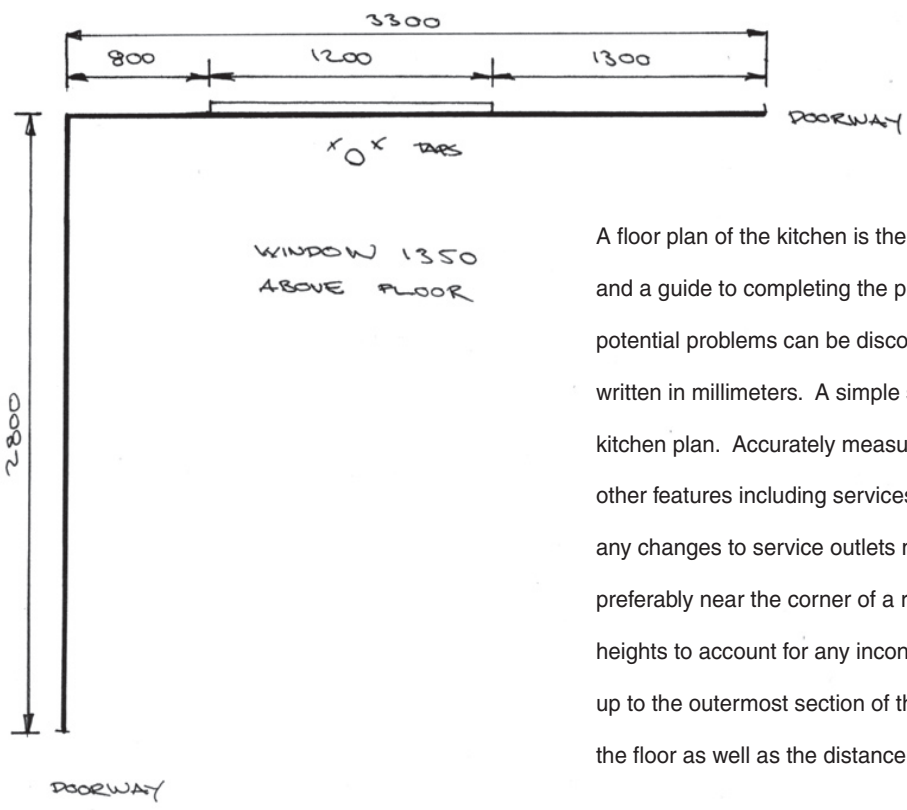


Design is begun by creating a list of all the needs to be met by the project. Appliances and fittings require consideration in the plan. Decide on the importance of Microwave space, Pantry, Dishwasher and Drawers for Pots and Cutlery. Consider issues of workflow as well as traffic in and through the kitchen.

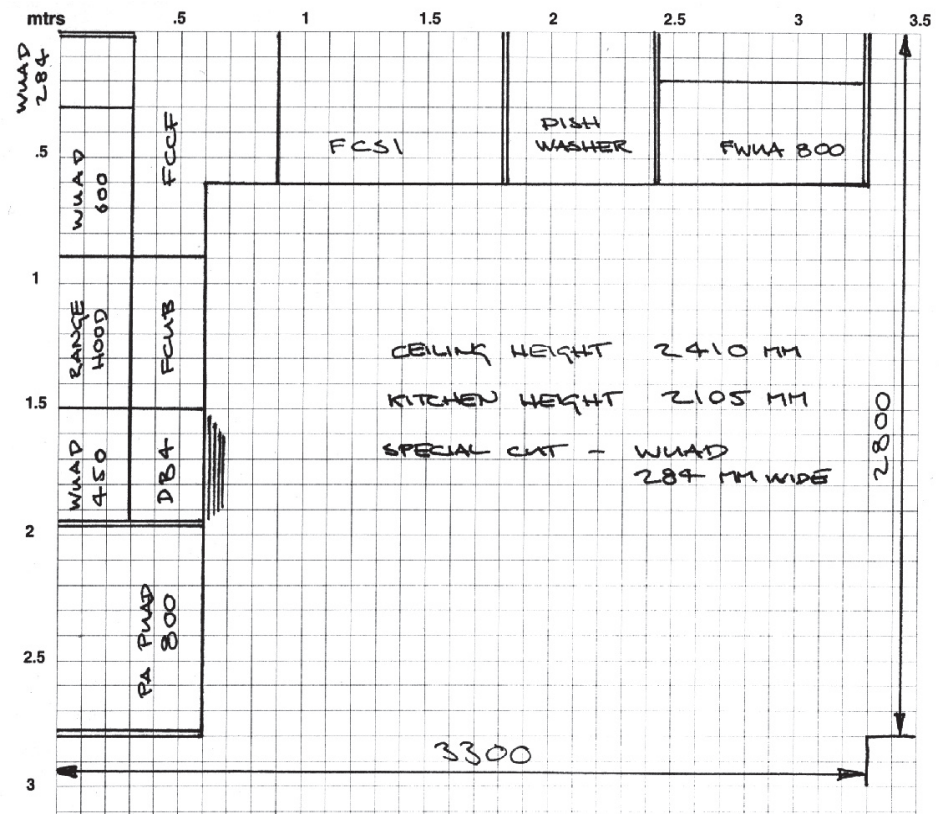


A floor plan of the kitchen is the next important step. The Plan is the source of information and a guide to completing the project successfully. The plan is drawn to scale so that any potential problems can be discovered before construction. All dimensions are made and written in millimeters. A simple scaled overhead floor plan is the most important part of a kitchen plan. Accurately measure the room dimensions, locating all the doors, windows, and other features including services such as plumbing, gas and electrical fittings. At this point any changes to service outlets must be considered. A room is measured from wall to wall, preferably near the corner of a room to the next corner along the wall. Measure at several heights to account for any inconsistencies with the wall. Where a window is located, measure up to the outermost section of the window frame or recess. Note the height of the window from the floor as well as the distance from either wall.

Draw the room on the Layout Sheet provided. Each square represents 100mm. Mark all walls, windows and fixtures including light switches and power points.

Place and Label all units. For kitchen plans, all Cabinets are drawn in total width. Floor units are drawn 600mm deep to allow for benchtops. Benches are not drawn separately unless the top extends beyond the cabinet below it; this would occur where a floor unit is an "end of run". As with the front edge, all exposed sides of bench tops extend 25mm beyond the outer edge of the last door, drawer front or panel of the cabinet below. This must be accounted for when planning the Layout.

Drawers are indicated, as are cavities for a dishwasher or a microwave. Despite the broad size range available, some kitchens will not be a perfect fit for the catalogue units. A run of cabinets will often finish 30 or 40 mm too short or too long. To solve this, one cabinet can be "Cut" to a custom width as a Special Unit. To maintain symmetry and economy, Cuts are kept to a minimum. Certain cabinets can not be Cut, such as Floor Corner Units or Corner Pantries. Consider how the Cut unit fits into the line of the units above or below. Special Units must be specified separately on the Layout Sheet.



Decide on an overall kitchen height. The height of the kitchen decides the specifications for all Tall Units. Kitchen cabinets are finished at heights of 2105mm, 2225mm and 2400mm. All Tall Units will stand this high. All Wall Units will finish at this height. Select a Splash Back height. The height of a kitchen is divided into the distances from Floor to Counter Top; Counter Top to bottom of Wall Unit (Splash Back); and from bottom of Wall Unit to Top of Kitchen.

The Catalogue lists all applicable kitchen heights with the specifications of Wall Units. For example where a Kitchen Height is 2105mm with Splash Backs 606mm all the wall units will be 600mm High. Some Wall Units may require mounting higher or lower than the rest of the Splash. A Range Hood Cupboard, for example, must hang at a given height and may be even more functional hanging higher above the cooktop. In a kitchen with a Splash height of 606mm, a Wall Microwave Unit is more accessible at 480 H, where the height to reach into the oven is lowered from 1570mm to 1420mm.



656 Minimum Splash for Gas,
606 for Electric Tops.

Use the finished Plan to recheck all cabinet dimensions for fit, and clearance from other units. Confirm sizes of cavities for sinks and appliances as well as space needed for opening of doors and drawers.

Detail all specifications on the Layout Sheet. Information is required for all appliances and sinks.

PLANNING TIPS

Dishwasher Cavities - A space of 605mm is required to install most upright dishwashers. Coloured End Panels are placed over the Cabinets either side. Overall required width for a Dishwasher including End Panels is 637mm. Clearance should be provided for the door to open without fouling cabinet handles or colliding with other drawers or doors.

Drawers near corners - Drawers placed too close to corners can collide with Cabinet handles on other side of corner. Check all drawer paths for obstacles.

Sink Cavities - Sinks require a single unit beneath the breadth of the sinks. The sink unit must be internally wide enough to contain all basins. A sink top may cross the gables of cabinets below, but should avoid crossing a benchtop join. Sinks can not be placed above drawer units. The draining board of a sink can extend over the top of a dishwasher cavity.

Splash Heights - Varying heights need to be considered for wall units. It is important that the Wall Units above a Splash remain accessible. A Splash which is too low can cause problems using benchtops effectively and obscure vision of the work surface.

Range Hoods - For Fixed or Sliding Hoods a Special Cut Wall Unit, normally 600mm wide is hung with longer doors to cover the mechanism fastened to the bottom of the cabinet. Dimensions are required for individual range hoods. A higher Splash behind the cooktop provides less restricted head space and better line of sight to the burners. Range hoods must hang at least 656 mm above a gas cooktop while electric top clearance must be a minimum of 606 mm.

Benchtop Overhangs - The front edge of a benchtop overhangs the doors, drawers or front panel of cabinets below by 25mm. Where a benchtop finishes above the end of a Floor Unit the side edge also overhangs the End Panel by 25mm. This overhang must be considered when butting benchtops against door frames or architraves.

Wall Microwaves - WUCA consist of coloured End Panels and base containing a 600mm wall unit above a 600 W x 350 H oven cavity. The height of the unit depends on the height of the kitchen and selected Splash height. Planning dimensions of the WUCA are 632 W x 450D. With a greater depth and suggested lower Splash height than the rest of the Wall Units the WUCA hangs best next to a Tall Cabinet or a Fridge Panel. End of run against a wall works but beware of hanging a microwave too far into a corner making it difficult to reach. Consider which side the microwave hinges on and how this affects access.

Appliances - Where an appliance is recessed into benchtop make sure appropriate clearance is provided in cabinets below if required, especially above drawers. Plan for power and heat venting of all appliances. Late Model Fridges often require clearance at sides as well to vent. Cook tops can not be placed under windows. Check all manufacturers documentation for planning and installation instructions.